



Topic: PCB hardware & software differences; PCB part code 1600387(MIX); 1600397(Pour'd);1600501(Coldbrew)		TB No.: TB10059	Date: 01/08/2023
Affected Machines:	MIX;1000880;1000887;1000870;1000875;1000871; Coldbrew, 1000950; Pour'd, 1000944	Priority: Low	Created By: Gareth Fitzpatrick
From Serial No.:	N/A	Created For: All	Technicians
From Date:	Feb 2023	Pages: 1/1	

UPDATE

The traditional MIX PCB has been revised in terms of both hardware and software so its compatible with a wider range of machines, but also to remove previous bugs and added enhancements. In the latest revision, 3.0, undercounter machines can have the temperature increased from 94 to 97. (201f to 206.6f)

*****For US machines please note the same applies, except the part code is different depending on voltage, 230v or 110v.***** US at the end of the machine product code is for US specific machines.

Hardware & Software updates

- 1600387, **Tango 7** Revision 1.18 and lower is for all MIX machines as listed above, commencing Dec 2016 to Feb 2022. UC temp is fixed at 94 degrees Celsius and below.
- **1600387**, **Tango 8/9** is the latest hardware and software, **Revision 3.0** for MIX and Coldbrew, machine numbers above.
- **1600397**, **Tango 9** is the latest hardware and software, **Revision 3.2** for Pour'd to operate Hot, Cold and Sparkling. This PCB is **not compatible** with either **MIX or Coldbrew**
- **1600501**, **Tango 7/8/9** is the hardware and software, **Revision 1.2** for ColdBRU machine.
-

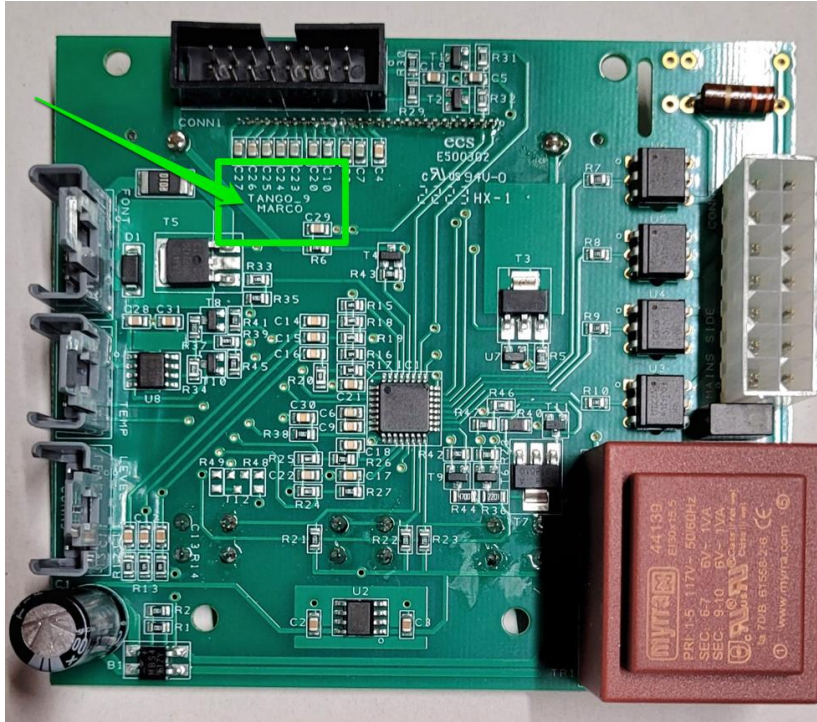
*****Please be aware PCB boards 1600387, 1600397,1600501 look identical but are compatible only in the machines listed above***** You can program a Standard MIX board once the hardware (Tango version is compatible)

The software Revisions are applicable as of Aug 2023

PCB images



1600397_3.2 Tango 9, 1000944, Pour'd & US part codes denoted by US at the end of the product code



1600387_3.0 Tango 8, MIX;1000880;1000887;1000870;1000875;1000871; Coldbrew, 1000950 & US part codes denoted by US at the end of the product code.

