



TB10046

Topic: JET6, Touchscreen software update Revision 1.5, with upgraded PCB Revision 2.2 (P/N1600202K)		TB No.: 10046	Date: Aug2017
Affected Machines:	JET6	Priority: Medium	Created By: Gareth Fitzpatrick
From Serial No.:	<0717.....(First 4 digits)	Created For:	Upgrade Instruction
From Date:	July 2017	Pages: 1/6	

OVERVIEW

The following update is a chargeable optional upgrade in the event of failure of the touchscreen or PCB. It is not a compulsory upgrade.

The attached kit is a replacement/ upgrade for the touchscreen/PCB software.

The upgrade will contain the following benefits/ features

- Robust Display screen, no issues with SD card memory.
- New features of the display include:
 - Dilution setting. Feature to allow a % of coffee dilution by mixing water to coffee ratio.
 - New software will incorporate a Low water pressure warning when insufficient supply to machine.
 - No SD CARD memory.

Please note the working PCB board removed Marco P/N 1600201 should be packaged and returned to Marco to receive a full refund for this part. You will be charged for both parts 1600202C & 1600201 as below but will be refunded the PCB board price 1600201 once returned in working order. Please use the BOX provided for safe return.

UPDATE

Touchscreen & PCB contents (P/N1600202K)

- Touchscreen software **version 1.5**(1600202C)
- 16 pin ribbon cord.(1501183)
- PCB with software **revision 2.2**(1600201)
- Battery. (1501093)



Procedure

The following procedure should be carried out by trained personal.

Replace the New main PCB & touchscreen. (1600202K)

- **Important. Before powering down the machine record the current settings in the Menu specific to that customer. Temp, ratio, Mode, Power setting etc....**
- **! Caution Isolate Machine from mains power supply before starting work.**
- Remove two securing screws in the drip tray as illustrated in Fig 1.0
- Remove the front s/s panel by locating and removing the 6 securing screws as illustrated in Fig 1.0 (8 screws in total, 6 side and 2 in the drip tray.)
- Remove the earth cable attached to the front panel located bottom left side as per Fig 2.0.
- Remove the touchscreen by removing the 4 securing screws, Fig 3.0a
- Insert the new touchscreen ensuring correct way up, Fig 3.0a. The SD card slot should be facing towards centre of machine (the cup surround as per Fig 3.0b)
 - *Please note the front bezel should be orientated with the thicker band to the top and thinner band to the bottom so the screen is facing the right way round.*
- Remove the main PCB board cords and cables (Take a photo of the arrangement if unsure how to reinsert). Wiring diagram included, Fig 5.0 for EU & Fig 6.0 for USA(2 parts)
- Remove the PCB board by pinching the 6 securing clips (fig 4.0).
- Locate the new PCB board onto the 6 plastic mounting clips and reinsert the cables/ cord into the correct locations.(Use the photo previously taken if unsure) Make sure the battery is inserted into new main PCB board. See fig 4.0 for battery location. Wiring diagram included Fig 5.0 for EU & Fig 6.0 for USA (2 parts) for any clarifications on PCB.
- Connect the 16 pin ribbon provided in the kit to the main PCB board and the new touchscreen. The ribbon must be inserted the correct way on the PCB board. Use the location peg for the correct orientation on the PCB and see **Fig 3.0a & Fig 3.0b** for the correct orientation of the ribbon on the touchscreen.

Last step is to reassemble the front panel back onto the machine:

- Ensure all cables are correctly inserted into the main PCB board and relocate the S/S panel back on the machine ensuring the earth cable is re-inserted to the front panel, fig 2.0.
- Now insert the ribbon cable 16 pin onto the new Touchscreen, again ensure the orientation is correct. See Fig 3.0a
 - *Please note the front plastic bezel should be orientated with the thicker band to the top and thinner band to the bottom so the screen is facing the right way round. See yellow arrows Fig 1.0*
- Secure all 6 screws once housed correctly on the machine as per fig 1.0.
- Relocate the drip tray recess and secure with the two screws as per fig 1.0.
- Plug back in the machine and the new software will display **Jet 6 1.5 LCD** followed by **version 2.2**. Upgrade is successfully complete.
- Reprogram the machine with the saved settings as per the first step.
- Perform a water calibration.
- Perform a Grinder calibration if Grinder fitted.
- Machine is now ready for use.

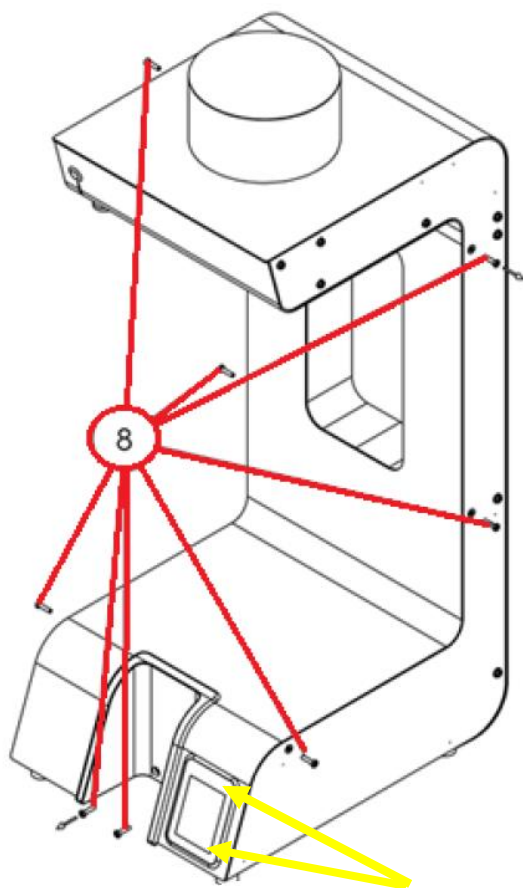


Fig 1.0

A removable earth wire is in this location which can be temporarily disconnected



Fig 2.0

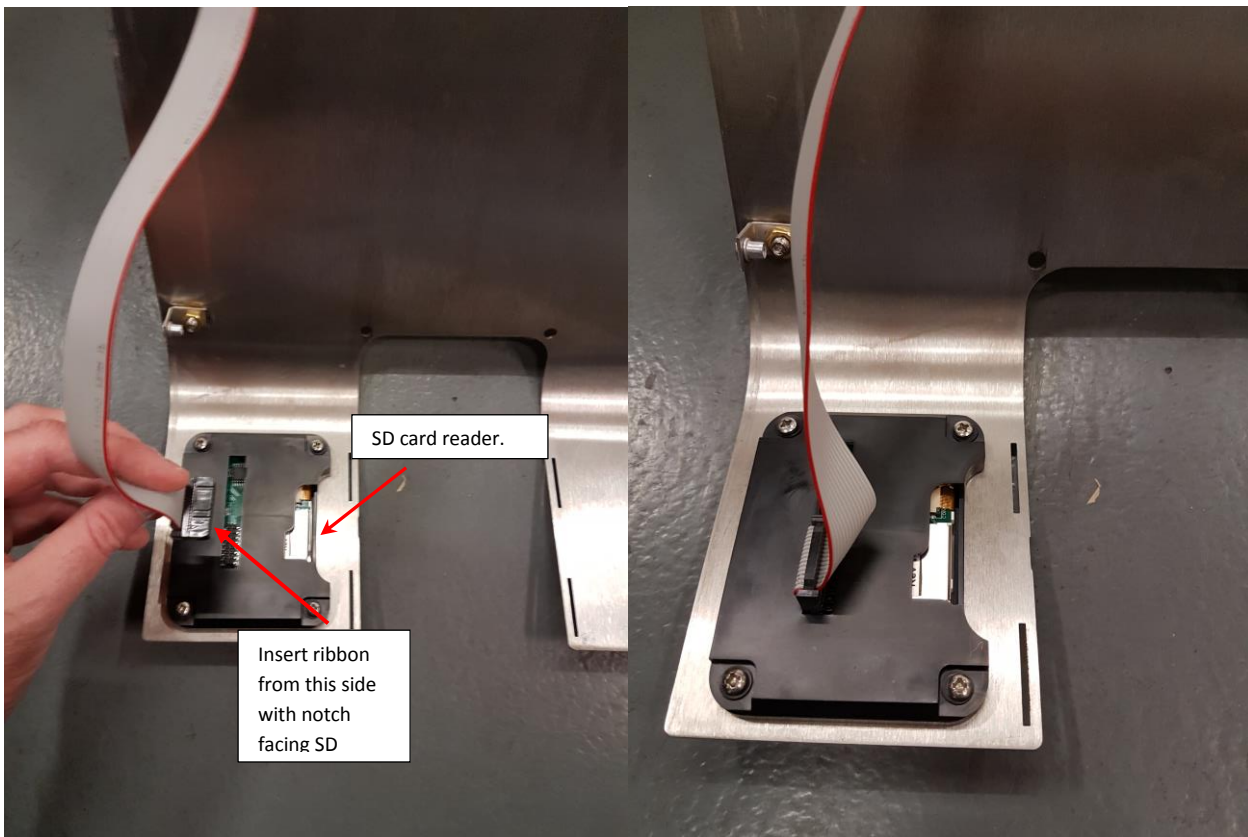
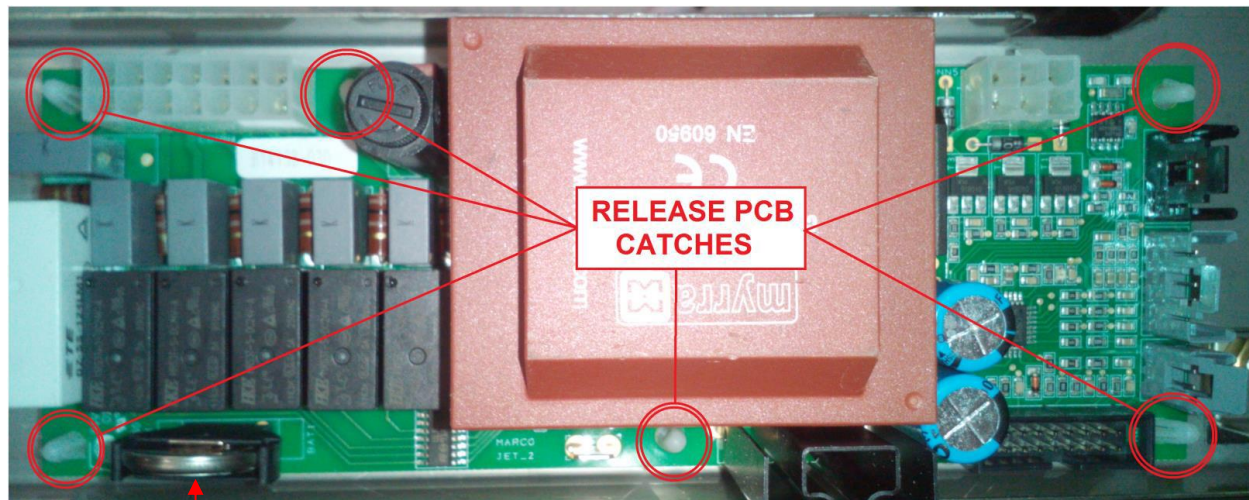


Fig 3.0a

Fig 3.0b



Battery. Negative
is in the direction
of arrow and
must be fit this
way.

Fig 4.0



TB10046

Appendix – Wiring diagram – Jet 6 2.8kw P/N: 1000851 EU

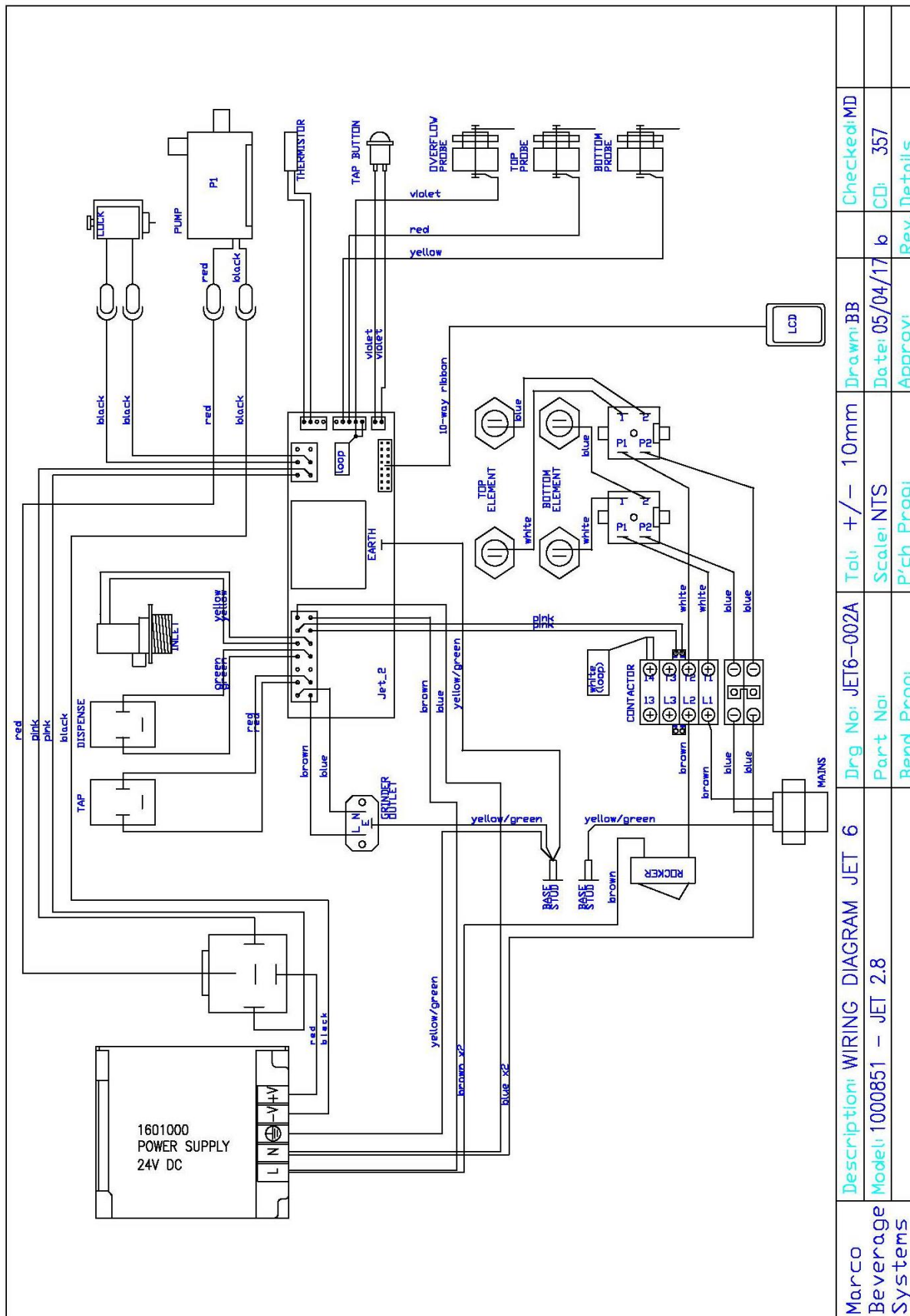


Fig 5.0 EU



TB10046

Appendix – Wiring diagram – Jet 6 2.8kw P/N:1000851 US

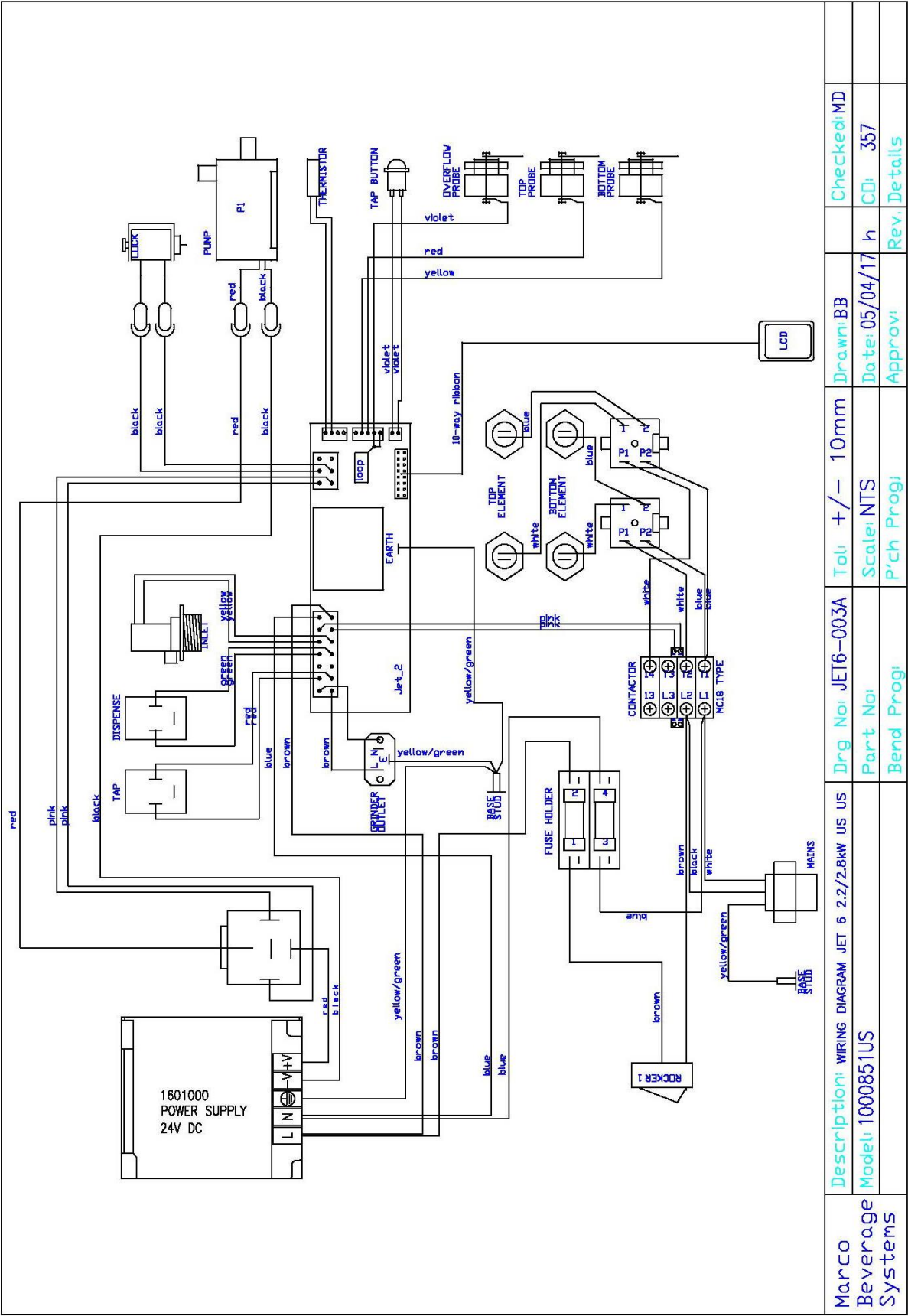


Fig 6.0 USA