



Descale & Level probe cleaning procedure

Eco Boiler's (T5, T10, T20, PB5, PB10, WMT5, etc.)

If the machine display's **two red flashing** lights in sequence, the below procedures should be performed to clean the machine of scale/ mineral deposits to resume operation.

Cleaning water level probes: To fix the issue **two red flashing** lights.

- If the boiler had a fault with two flashing red lights it will not turn on the heating element as the low level probe (fig 3) cannot be detected due to scale or mineral deposits on the probe. In order to resume operation the probes should be cleaned back to metal using a scouring pad. i.e (Scotch brite pad). See Fig 3 below to identify the probes. NOTE. **To perform the descale procedure you may have to clean the low level probe to resume operation.**
- Re-connect the mains water and turn on power, allow the machine to fill.
- The machine should now stop at the low level probe and the heating element will turn on. The heat fill cycle will continue until full.
- *A full descale should now be performed if scale is present in the boiler tank. See below "Descale procedure".*

Descale procedure:

Isolate the machine from the power supply

- Isolate the machine from the water supply
- Allow the machine to cool
- Remove the lower front panel to access the drain hose located on the lower left. To remove the panel, remove the single retaining screw and prise the panel off using a flat head screw driver. (Fig 1)
- Drain the water from the machine using the drain hose. **Don't forget to replace the drain stop after use**
- Remove the top outer lid and the tank lid by removing the butterfly nuts. (Fig 2)
- Gently remove as much scale as possible by hand using a scouring pad and water. Pay particular attention to level probes, thermistor pocket and heating element. Be careful not to damage any attachments. (Fig 3)
- Use Scale Kleen, Marco p/n: 8000270, or a similar descaling product. Follow the instructions of the product.

Note:

- For best results pour the solution into the tank and allow the machine to heat. Allow the descale solution to work for **min 30** mins or as per the instructions of the brand been used.
- Thoroughly clean and flush the machine at least 3 times before re-use.

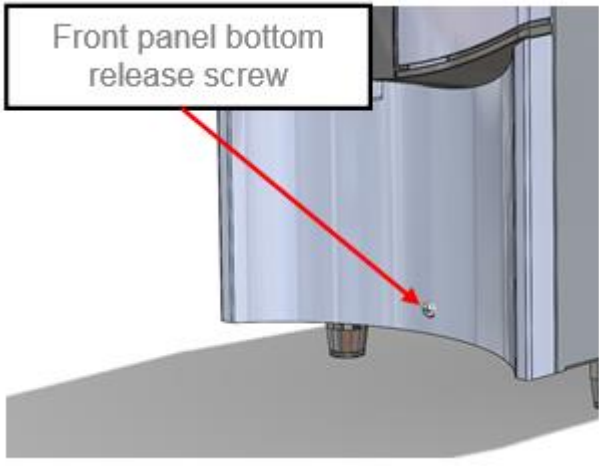


Fig 1

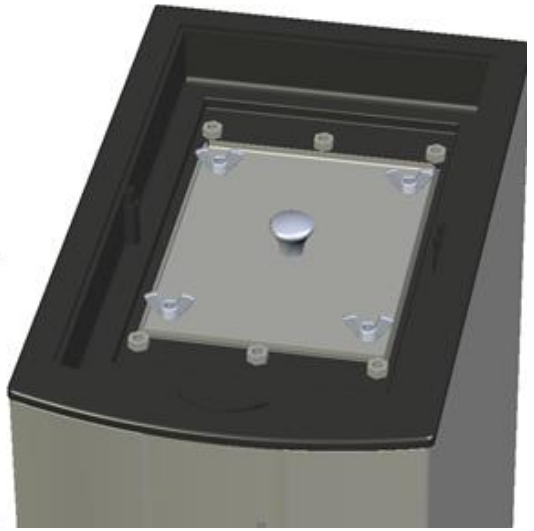


Fig 2

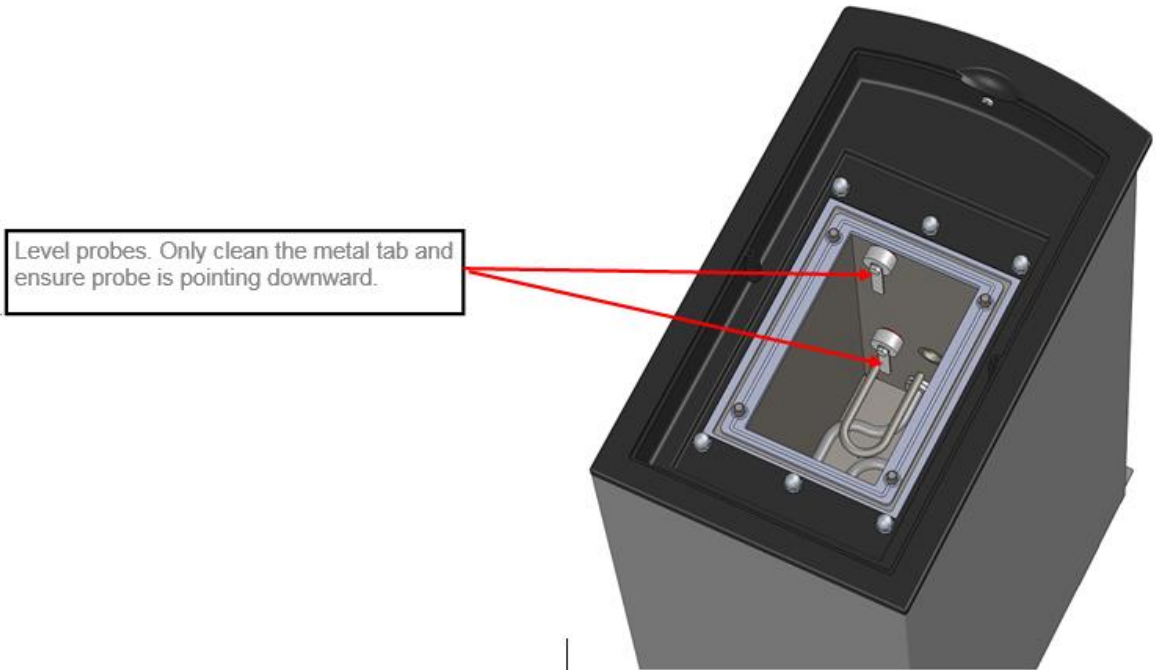


Fig 3